

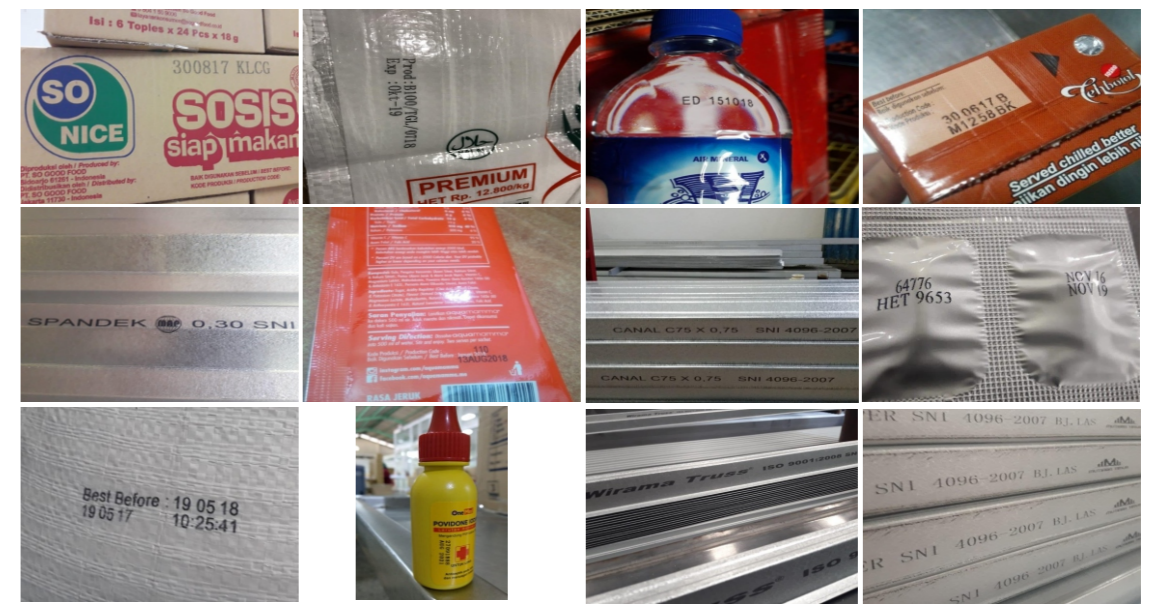
BIISTON

Thermal Injet Printer



Technical Parameters

Machine	Body Material	Industrial Stainless steel
	Operating System	Embedded Operating System
	Comm Interface	Network Interface USB RJ45 to RS 232
	Working Environment	Max Temp 55 C Degree / Humidity 30 to 70 % RH
	Power Supply	100-200 Volt AC 50-60 Hz Input / 30 Volts 4 Ampere DC output
	Dimension Controller	202mm x 119mm x 61,2mm / Head Holstar 112mm x 79mm x 103mm
	Main Hardware	American TIA m3358 Industrial grade CPU / USA xilinx 5pant6 Industrial grade FPGA/ TIJ Dedicated ASIC Chip
	Languages	Italian, English, French, Finish, Arabic, Danish, German, Russian, Norwegian, Portuguese, Spanish, Japanese
	External Interface	Photocell, Encoder, External Reverse / inverse control, Alarm output, Serial Number external Reset, External data Selection
	Printing Head	Nozzle Type
Print Distance		2mm to 5mm
Print Accuracy		150DPI / 300 DPI / 600 DPI
Print Speed		120m/min at 300 DPI
Print Height		Minimum 1mm / Maximum 50,8mm
Ink Type		Aquaeas or Solvebt Based 42 ml Cartridges C15S
Ink Color		Balack, White, Red, Yellow, Blue, Green, Stealth, UV readable
Cartridge Chip		Contactless RFID tags for automatic identification and recording ink parameters and consumptions
Printable Subotrates		Cardboard, Plastic, Metal, Cables, Electronic componentd, AutoPart, Industrial Chemical Packaging, Pharmaceuticals and more
Print Contens		Multi language Characters, 2D Cide, Barcode, Images, Serial Numbers, Date, Counters, Variable Database, RS 232 to receive real data to print



www.hitechmachine.co.id



PT. Hitech Marwah Indonesia
 Citra Harmoni A-09 Jl. Trosobo Km 20, Taman Sidoarjo 61257
 Telp/ Fax : (031) 7881496